



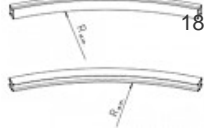




Product Family Söll MultiRail stainless steel system

The Söll MultiRail Stainless Steel Horizontal Rail System conforms to the latest European standard EN 795:2012 type D and CEN/TS 16415:2013 regulations for horizontal anchor devices. Söll MultiRail is not only for installation at foot level or overhead but can also be installed sideways for use as a handrail. The high quality stainless steel product line is resistant in the toughest environmental conditions.



Product Numbers & Ordering Information

Product Numbers	Details
 17488 / 1007120	Anchor rail sold per meter The available standardised lengths are 3m and 6m but it can also be supplied on demand in any length from 20cm up to 6m.
 24401 / 1013485	Anchor rail - Standard length 3000mm The available standardised lengths are 3m and 6m but it can also be supplied on demand in any length from 20cm up to 6m.
 19146 / 1013480	Anchor rail - Standard length 6000mm The available standardised lengths are 3m and 6m but it can also be supplied on demand in any length from 20cm up to 6m.
 18269 / 1029721	Anchor rail bended sold per meter A curved version with radius > 2000 mm can be mounted either upward or sideward.
 18270 / 1013604	Bending Vertical and horizontal profile A curved anchor rail with radius > 2000 mm can be mounted either upward or sideward.
 17332 / 1013481	Rail connector A coupling part connects individual rail sections.
 17404 / 1013482	End-stop without exit The end-stop prevents the runner from coming out of the rail unintentionally.



23956 / 1013639

End-stop with exit

The end-stop prevents the runner from coming out of the rail unintentionally; however it can be opened to remove the runner.



17331 / 1013516

Horizontal curve

These components allow Söll MultiRail to follow the profile of the building. The radius is 80 mm with a standard angle of 90°.



17330 / 1013531

Vertical curve

These components allow Söll MultiRail to follow the profile of the building. The radius is 80 mm with a standard angle of 90°.



20449 / 1013591

Horizontal track change

The T-Junction allowS several rail systems to be connected and facilitates changes in any direction.



21967 / 1013602

Horizontal track change

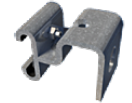
The T-Junction allowS several rail systems to be connected and facilitates changes in any direction.



17489 / 1013483

Bracket 1, stainless steel

Teflon inserts allow the rail to glide smoothly inside the brackets. The rail is not subject to any constraint and therefore compensates for thermal expansion. Customised intermediate anchors can be provided upon request.



20168 / 1029717

Bracket 1 with locking screw M6, stainless steel

Teflon inserts allow the rail to glide smoothly inside the brackets. The rail is not subject to any constraint and therefore compensates for thermal expansion. Customised intermediate anchors can be provided upon request.



17112 / 1013513

Bracket 2, stainless steel

Teflon inserts allow the rail to glide smoothly inside the brackets. The rail is not subject to any constraint and therefore compensates for thermal expansion. Customised intermediate anchors can be provided upon request.



20167 / 1029723

Bracket 2 with locking screw M6, stainless steel

Teflon inserts allow the rail to glide smoothly inside the brackets. The rail is not subject to any constraint and therefore compensates for thermal expansion. Customised intermediate anchors can be provided upon request.



21031 / 1013592

Bracket 5, stainless steel

Teflon inserts allow the rail to glide smoothly inside the brackets. The rail is not subject to any constraint and therefore compensates for thermal expansion. Customised intermediate anchors can be provided upon request.



21677 / 1013601

Bracket 7, stainless steel

Teflon inserts allow the rail to glide smoothly inside the brackets. The rail is not subject to any constraint and therefore compensates for thermal expansion. Customised intermediate anchors can be provided upon request.



21524 / 1013600

Tube clamp

Teflon inserts allow the rail to glide smoothly inside the brackets. The rail is not subject to any constraint and therefore compensates for thermal expansion. Customised intermediate anchors can be provided upon request.



17407 / 1013517

Closed runner

Available in stainless steel with polyamide inlays to minimize friction and provide great gliding performance, it is fitted with a stainless steel connector. As wheels are not necessary, it is dirt-resistant as well as very light, only 400g. It can be removed from the system at the end-stop exit sections or remain permanently on the rail.



17792 / 1013518

Openable runner

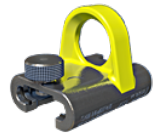
Available in stainless steel with polyamide inlays to minimize friction and provide great gliding performance, it is fitted with a stainless steel connector. As wheels are not necessary, it is dirt-resistant as well as very light, only 600g. By means of an easy to use opening and closing mechanism, it can be removed or attached anywhere along the rail offering more flexibility to the user during his work.



24168 / 1014601

Overhead runner

Made from stainless steel with 4 load-bearing wheels and a swiveling stainless steel eye, the wheeled runner may only be used for overhead applications. The runner can pass horizontal curves. It can be used with a self retractable lifeline. The worker attached to the lifeline can cover a wide working zone.



26308 / 1032550

Lockable runner

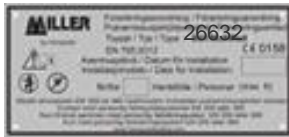
Made from stainless steel with an additional bolt to lock, this runner is ideal for use on rails attached to objects in motion such as those installed on trucks. The runner stays in place when the truck is driven.



25904 / 1030050

MultiRail identification plate

for MultiRail horizontal anchor device (DE/EN/FR/ES)



26632

MultiRail identification plate

for MultiRail horizontal anchor device (FIN/SWE/NOR/DK)

Overview

Key Features

Key features

Söll MultiRail Stainless Steel system offers an adapted solution for any industrial building or wind energy turbine.

Various fixation possibilities are available for different structures. Just a few bolts and tools are required for a quick and easy assembly of the rail system.

Söll MultiRail provides fall protection for up to 6 workers across a maximum span of 6m, depending on the rail configuration. If a fall occurs, this effective system ensures that structural damage is prevented through energy absorption by the several intermediate brackets and the end-fixing devices.

Four different runners ensure smooth movement of the worker along the rail: closed runner for frequent use of the same rail, openable runner for flexible use on several rail systems, wheeled runner for overhead applications and a lockable runner for working situations where the shuttle should not move.

Robust rail system that is quick and easy to install

In case of a fall, the energy is reduced by the bending of the rail, thereby the structure remains protected. The low friction mounting brackets transmit in the event of a fall the absolute minimum impact to the structure. In conformity with the EN795:2012 standard, the rail can absorb forces up to 70 kg without permanent deformation.

The rail is not fixed into mounting brackets and therefore compensates for thermal expansion. Easy connection of curves and T-junctions allow the system to be easily customized to any structure.

A worker connected to the Söll MultiRail system can pass safely along vertical sections up to 1 m high.

The Söll MultiRail horizontal anchor device is often used in the following sectors:

- Storefronts
- Flat or steep roofs
- Working platforms on masts and buildings
- Hangars, shipyards, cranes
- Industrial plants
- Wind nacelles
- Water treatment

Söll MultiRail can also be used as an overhead solution in combination with a self retractable lifeline attached to a wheeled shuttle for example in following applications:

- Truck cleaning
- Maintenance
- Loading bay

Suitable for working in suspension

The system is suitable for working in suspension under the following conditions:

- Up to 2 users in the system
- The structure is rigid enough that no deformation occurs during usage
- Connection to two wheeled overhead mobile anchor points (shuttles), one for suspension and one for fall protection

Recommended Industries/Use

- Construction
- Manufacturing
- Oil and Gas
- Transportation
- Utilities
- Nuclear
- Wind Energy

Hazards

- Fall from height

Regulations

- Conforms to EN 795:2012 type D standard

Warranty Information

We sincerely believe that our fall protection equipment is the best in the world. Our products endure rigorous test to ensure that the fall protection equipment you trust is manufactured to the highest standards. Miller fall protection products are tested to withstand normal wear and tear, but are not indestructible and can be damaged by misuse. Our warranty does not apply to abusive treatment of the product. In the unlikely event that you should discover defects in either workmanship or materials, under our warranty of one year after delivery, we will repair or replace the product at our expense. If a replacement is necessary and your product is no longer available, a comparable product will be substituted. Should a product issue surface, contact us at +33 248 53 08 97 (France, Spain, Portugal, North Africa) or +49 9281 8302 0 (Northern and Central Europe, Italy). Manufacturing specifications are subject to change without notice.

Certifications

Conformity licence Söll MultiRail EN_2014

http://www.honeywellsafety.com/Supplementary/Documents_and_Downloads/Fall_Protection/Permanent_Anchorage_Systems/4294981392/1033.aspx

Söll MultiRail System conformity licence

Literature & Documents

Miller Systems brochure Söll MultiRail_UK

http://www.honeywellsafety.com/Supplementary/Documents_and_Downloads/Fall_Protection/Permanent_Anchorage_Systems/4294980488/1033.aspx

Söll MultiRail brochure - English

Technical_Data_Sheet_MultiRail_Stainless_Steel_UK

http://www.honeywellsafety.com/Supplementary/Documents_and_Downloads/Fall_Protection

[/Permanent_Anchorage_Systems/4294984463/1033.aspx](#)

Technical Data Sheets MultiRail Stainless Steel

Söll MultiRail operating instructions SE 25

http://www.honeywellsafety.com/Supplementary/Documents_and_Downloads/Fall_Protection/Permanent_Anchorage_Systems/4294970470/1033.aspx

Söll MultiRail operating instructions_SE 25

user manual_Söll MultiRail closed glider_SE 26

http://www.honeywellsafety.com/Supplementary/Documents_and_Downloads/Fall_Protection/Permanent_Anchorage_Systems/4294984510/1033.aspx

user manual_Söll MultiRail closed glider_SE 26

user manual_Söll MultiRail openable glider_SE 27

http://www.honeywellsafety.com/Supplementary/Documents_and_Downloads/Fall_Protection/Permanent_Anchorage_Systems/4294984511/1033.aspx

user manual_Söll MultiRail openable glider_SE 27

user manual_Söll MultiRail overhead glider_SE 33

http://www.honeywellsafety.com/Supplementary/Documents_and_Downloads/Fall_Protection/Permanent_Anchorage_Systems/4294984512/1033.aspx

user manual_Söll MultiRail overhead glider_SE 33

Training & Proper Use

Proper product training and professional fall protection training is recommended. Refer to Product Use Instructions enclosed with products.

Additional Information

France, Spain, Portugal, North Africa : +33 248 53 08 97 and email : lignedevie.hsp@honeywell.com

Northern and Central Europe, Italy : +49 9281 8302 0 and email : scs-hof@honeywell.com

Technical Support

France, Spain, Portugal, North Africa : +33 248 53 08 97 and email : lignedevie.hsp@honeywell.com

Northern and Central Europe, Italy : +49 9281 8302 0 and email : scs-hof@honeywell.com