

---

# Instructions for use and maintenance

## "Söll MultiRail" Runner Horizontal

Runner complying with EN 795  
Part. No. 24168

Serial number: \_\_\_\_\_

Year of manufacture: \_\_\_\_\_ Date of purchase: \_\_\_\_\_

(The following must be completed by the operator in permanent waterproof ink.)

Date of initial operation: \_\_\_\_\_

Operator/user: \_\_\_\_\_

Street: \_\_\_\_\_

Place: \_\_\_\_\_

Phone: \_\_\_\_\_ Fax: \_\_\_\_\_

Issue: 28.07.2009

SE 33



## Table of contents

	Page
A Safety precautions	3
B Checking before use	4
C Using the runner	5
D Maintenance	8
E Storage	12
F Care	12

**These instructions are protected by copyright!**

They may not be reproduced and distributed in any ways/ by any means without prior written consent of the author according to

Articles 16 and 17 of the German Copyright Act.

Honeywell Fall Protection Deutschland GmbH & Co. KG  
will prosecute any violations against this under Article 106  
of the German Copyright Act.

**In this issue the following has been changed:** logotype

## A Safety precautions

- A 1. These instructions must be brought to the attention of any person using the „Söll MultiRail“ system before he begins to use the system. Actions contravening these instructions may endanger the safety of the user!
- A 2. The owner of the "Söll MultiRail" anchorage device must ensure that these instructions are:
- retained in a dry and secure condition at the installation or
  - retained by the operator, whereby he must ensure that the user is aware of the storage location of these instructions and that the documents are anytime easily available.
- A 3. The operator must be able to present these instructions to the manufacturer of the Söll system; (Honeywell Fall Protection Deutschland GmbH & Co. KG or one of its authorized dealers) upon request. These instructions must be enclosed when returning in the "Söll MultiRail" runner.
- A 4. The respective instructions must be observed when assembling, installing or using Söll accessories with this „Söll MultiRail" runner.
- A 5. The respective instructions must be observed when using other personal protection equipment.
- A 6. The "Söll MultiRail" runner is part of the „Söll MultiRail" system and as personal safety equipment has been designed only for correct use with the "Söll MultiRail" system.
- A 7. „Söll MultiRail" runners may only be fitted and operated with original Söll components / elements. **Combining with components and/or elements from other manufacturers can adversely affect the safety of the „Söll MultiRail“ system. In these situations Honeywell Fall Protection Deutschland GmbH & Co.KG and their dealers will reject any claims for product liability!**
- In addition, such cases are completely unauthorised, as Söll runners are tested and certified as complete systems. Full liability is therefore transferred to the operator!
- A 8. The "Söll MultiRail" runner may only be used with overhead "Söll MultiRail" systems, appropriate connecting sub-system (e.g. lanyard or retractable fall arrester) and with full body harnesses according to EN 361.
- A 9. Treat the "Söll MultiRail" runner with care.
- A 10. Before and during use the „Söll MultiRail" runner must be subjected to visual checks for correct functioning of the system.
- A 11. For the operator's safety it is important that he is in proper state of health and that he is not under the influence of alcohol or drugs.
- A 12. The facility must include a rescue action plan considering all possible emergency cases which may occur during works.
- A 13. When the equipment is sold in another country, it is important for the safety of the user that the reseller provides him this manual in the corresponding language of the country concerned.

## B Checking before use

- B 1. Before each and every use, check that the "Söll MultiRail" runner, and all other equipment are suitable for the task in hand.
- B 2. The „Söll MultiRail“ system may not be used if there are any doubts regarding its safe use, if defects are visible, or if the device has been strained as a result of a fall. It may not be used until written permit is given by a specialist. If necessary, the "Söll MultiRail" runner should be returned to the manufacturer.

### **Attention!**

A specialist is not authorised to carry out repairs!

- B 3. Before each use, it has to be ensured that there is sufficient fall clearance beneath the operator, so that in case of a fall, he cannot strike the ground or against other obstacles.

---

## C Using the "Söll MultiRail" runner

The Söll anchorage device may be used only by people who are trained and experienced in the use of the equipment.

Only one user may connect to each "Söll MultiRail" runner.

### **Note!**

The „Söll MultiRail“ guide rail must be mounted **overhead!**

The "Söll MultiRail" runner can pass horizontally through curves (i.e.: Part No. 17331).

Fit the EN 361 safety harness in accordance with the applicable instructions.

### **If using:**

- a lanyard with EN 355 energy absorber, attach this to the rear attachment point of the safety harness in accordance with the instructions.

### **Important!**

The energy absorber should always be at the harness end of the lanyard!

- a fall arrester with flexible line (e.g. rope & grab), use only equipment that the manufacturer has guaranteed will also function in the expected direction of fall.
- a retractable fall arrester (EN 360) height safety device, attach it to the eye of the "Söll MultiRail" runner by means of a carabiner.

### **Important!**

Do not use retractable fall arresters for protection when working on bulk materials!

### **Attention!**

Ensure you are in safe position, with other means of fall protection, when connecting to and from the system.

## C 1. Mounting/removing the runner

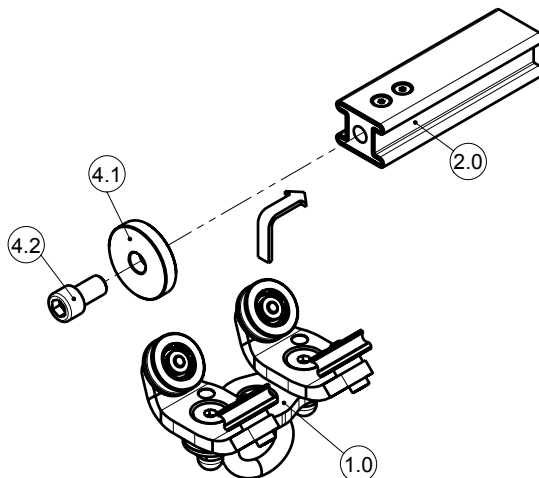
### **Warning:**

Before removing the "Söll MultiRail" runner from the rail, you must take other measures to ensure protection against falls.

### 1. Alternative:

Use: Fixed rail stop (Part No. 17404)

### **Fig. 1**



Remove the end plate (4.1) of the fixed rail end fitting (order no. 17404) by releasing the bolt (4.2).

**Fit** the "Söll MultiRail" runner (1.0) on to „Söll MultiRail“ guide rail (2.0).

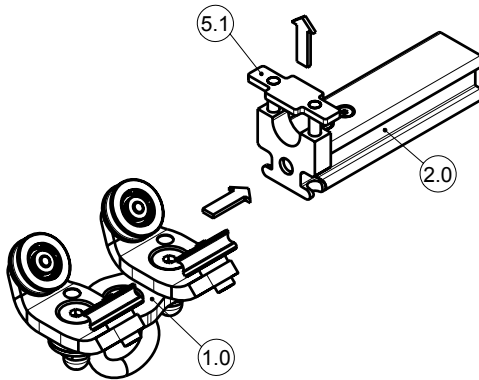
After fitting the end plate (4.1), secure it using the bolt (4.2) to ensure that the runner cannot run off of the rail unintentionally.

It is now possible to move the "Söll MultiRail" runner freely on the guide rail (2.0).

To **remove** the "Söll MultiRail" runner, unscrew the bolt (4.2), remove end plate (4.1) and remove the runner from the rail, then screw the plate back in position.

**2. Alternative:**

Use: Rail end stop with exit (Part No. 23956)

**Fig. 2**

With one hand, push the release plate (5.1) upwards and insert "Söll MultiRail" runner (1.0) into the guide rail (2.0) with the other hand.

Now, the "Söll MultiRail" runner can run freely on the guide rail (2.0).

When removing the runner, push the release plate (5.1) upwards and pull the runner from the rail.

**Important!**

The release plate (5.1) is spring-loaded and may require some effort to open.

---

## D Maintenance

- D 1. The regular maintenance of the "Söll MultiRail" runner are to be performed considering the legal regulations, the conditions of use and environmental conditions. Maintenance must be performed by a competent person, at least once a year.

**A competent person for the maintenance of this equipment is**

a person suitably trained or qualified by knowledge and practical experience to enable the maintenance to be performed properly.

- D 2. Regular maintenance is essential as the safety of the operator depends from the effectiveness and durability of the equipment.

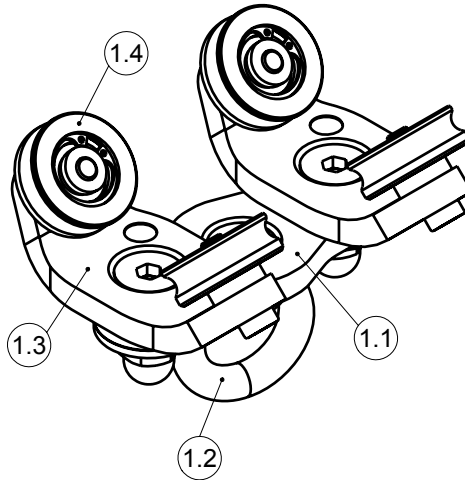
- D 3. **Maintenance checklist** (see fig.3/4)

The checklist has to be completed and signed by a competent person by means of an indelible pen. The single check points have to be marked respectively with "OK" or "D" (defect). The competent person is responsible for the accuracy of the information provided therein. Check points marked with a "D" can be corrected by a competent person only when the defect to be corrected concerns the removal of dirt (paint, mortar, concrete) or when markings need to be cleaned. This procedure must be noted in the annex of the check list (remarks), complete with date and signature of the competent person. The due date of the next regular inspection must also be indicated.

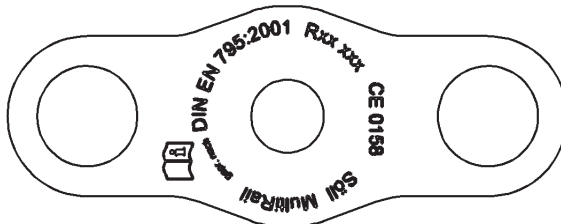
In case the correction of defects requires a partial disassembling of the components, the "Söll MultiRail" runner must be returned to the manufacturer together with the manual and with a relevant comments concerning the defect.



**Fig. 3**



**Fig. 4**



construction year/serial number - Rxx xxx

CE 0158



Söll-MultiRail  
DIN EN 795:2001

- Sign and identification number of the notified body controlling the PPE:EXAM BBGTesting and Certification GmbH
- advice to read the maintenance check list
- type denomination of the anchorage device
- reference to the European standard

Maintenance checklist, see Fig. 3/4

	1	2	3	4	5
Year					
Date					
Name of the specialist					
Signature					
Reason for the revision*					
Ext. Inspection is due					
<b>Item 1</b>					
<b>Connection part (1.1)</b>					
Free of dirty					
Marking available and legible					
no visible deformation					
<b>Item 2</b>					
<b>Anchorage eyelet (1.2)</b>					
no visible deformation					
Does not have any cracks					
Welding seam is not damaged					

\*\*"U" (Regular inspection) or "I" (Maintenance)

<b>Item 3</b>								
<b>Wheel plate (1.3)</b>								
free of dirty								
no visible deformation								
Screw and cap nut damaged								
<b>Item 4</b>								
<b>rollers (1.4)</b>								
Guide rollers run smoothly								
Sockets are firm, safety ring available								
no visible deformation								
Cylinder head screw								
<b>Further remarks</b>								

## E Storage

The "Söll MultiRail" runner should **not** under normal circumstances be left on the system, as it contains moving parts. However, the "Söll MultiRail" runner may be left on the system if it is within a building and contamination is kept within acceptable limits.

## F Care

Whenever the "Söll MultiRail" runner is used, check that the rollers can move freely and are not deformed. This check must be carried out even if the "Söll MultiRail" runner is left in the system.

## Further remarks

---

---

---

---

---

---

---

---